

PCB MATERIAL: FR4  
 LAYERS: 2  
 SOLDER MASK: LPI

SMOBC  
 GREEN SOLDER MASK  
 WHITE SILKSCREEN

FILE EXTENSIONS:

- \*.GTO - Top Overlay (Silkscreen)
- \*.GBO - Bottom Overlay (Silkscreen)
- \*.GTS - Top Solder Mask
- \*.GBS - Bottom Solder Mask
- \*.GD1 - Drill Drawing
- \*.GG1 - Drill Guide
- \*.GM1 - Board Guide
- \*.GM4 - Fabrication
- \*.GTP - Top Paste Mask
- \*.GBP - Bottom Paste Mask

BOARD STACKUP



1 OZ COPPER TOP & BOTTOM, PLATED TO 2 OZ

0.063 OVERALL THICKNESS

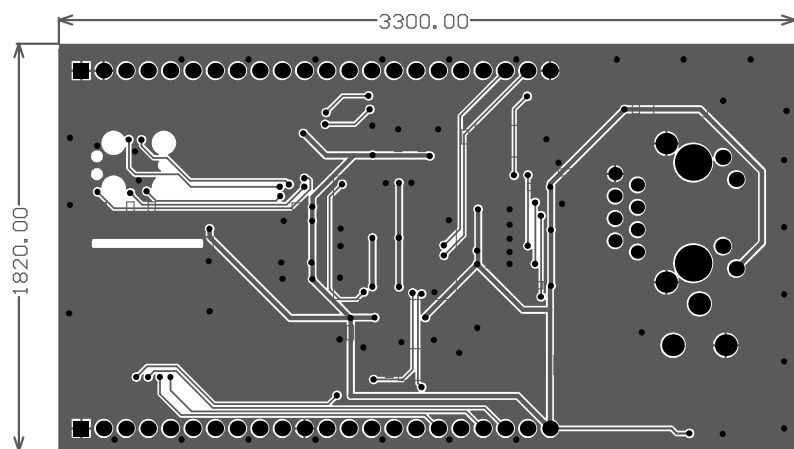
HOLE SIZE SPECIFIES FINISHED HOLE SIZE (TOL= +/- 2MIL)

FABRICATE PER IPC-6011 CLASS 2

UL RATING 94V-0 MIN

SOLDER MASK MATERIAL SHALL MEET ALL REQUIREMENTS OF IPC-SM-840

GERBER FILES MAY NOT BE ALTERED.



PCB MATERIAL: FR4  
 LAYERS: 2  
 SOLDER MASK: LPI

SMOBC  
 GREEN SOLDER MASK  
 WHITE SILKSCREEN

FILE EXTENSIONS:

- \*.GTO - Top Overlay (Silkscreen)
- \*.GBO - Bottom Overlay (Silkscreen)
- \*.GTS - Top Solder Mask
- \*.GBS - Bottom Solder Mask
- \*.GD1 - Drill Drawing
- \*.GG1 - Drill Guide
- \*.GM1 - Board Guide
- \*.GM4 - Fabrication
- \*.GTP - Top Paste Mask
- \*.GBP - Bottom Paste Mask

BOARD STACKUP



1 OZ COPPER TOP & BOTTOM, PLATED TO 2 OZ

0.063 OVERALL THICKNESS

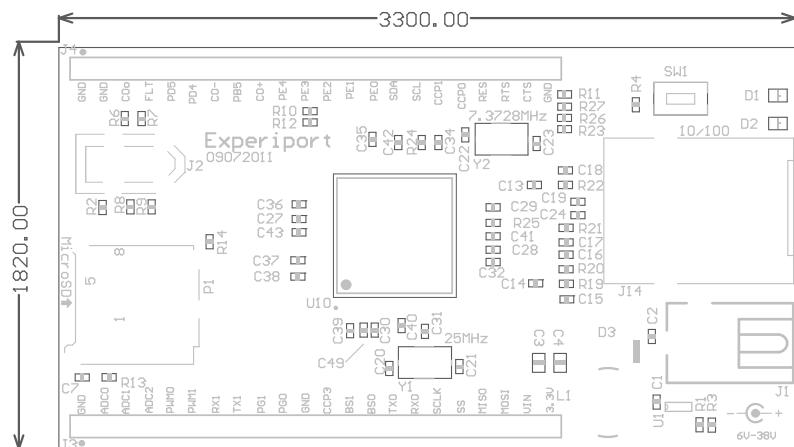
HOLE SIZE SPECIFIES FINISHED HOLE SIZE (TOL= +/- 2MIL)

FABRICATE PER IPC-6011 CLASS 2

UL RATING 94V-0 MIN

SOLDER MASK MATERIAL SHALL MEET ALL REQUIREMENTS OF IPC-SM-840

GERBER FILES MAY NOT BE ALTERED.



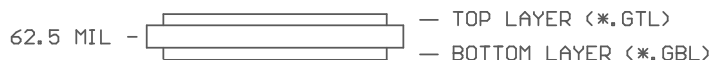
PCB MATERIAL: FR4  
 LAYERS: 2  
 SOLDER MASK: LPI

SMOBC  
 GREEN SOLDER MASK  
 WHITE SILKSCREEN

FILE EXTENSIONS:

- \*.GTO - Top Overlay (Silkscreen)
- \*.GBO - Bottom Overlay (Silkscreen)
- \*.GTS - Top Solder Mask
- \*.GBS - Bottom Solder Mask
- \*.GD1 - Drill Drawing
- \*.GG1 - Drill Guide
- \*.GM1 - Board Guide
- \*.GM4 - Fabrication
- \*.GTP - Top Paste Mask
- \*.GBP - Bottom Paste Mask

BOARD STACKUP



1 OZ COPPER TOP & BOTTOM, PLATED TO 2 OZ

0.063 OVERALL THICKNESS

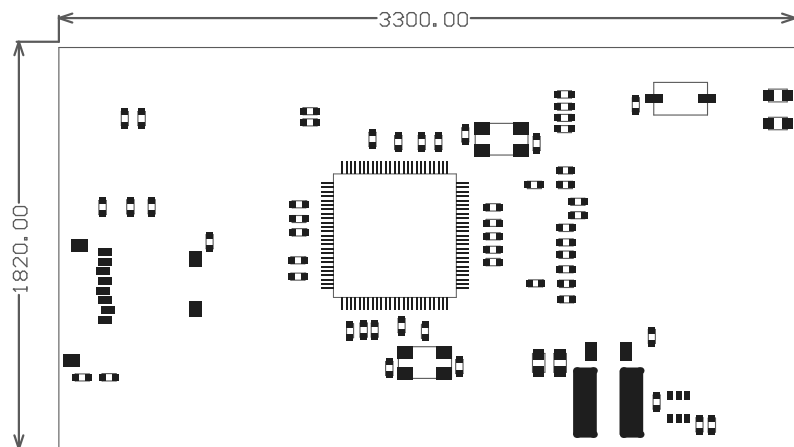
HOLE SIZE SPECIFIES FINISHED HOLE SIZE (TOL= +/- 2MIL)

FABRICATE PER IPC-6011 CLASS 2

UL RATING 94V-0 MIN

SOLDER MASK MATERIAL SHALL MEET ALL REQUIREMENTS OF IPC-SM-840

GERBER FILES MAY NOT BE ALTERED.



PCB MATERIAL: FR4  
 LAYERS: 2  
 SOLDER MASK: LPI

SMOBC  
 GREEN SOLDER MASK  
 WHITE SILKSCREEN

FILE EXTENSIONS:

- \*.GTO - Top Overlay (Silkscreen)
- \*.GBO - Bottom Overlay (Silkscreen)
- \*.GTS - Top Solder Mask
- \*.GBS - Bottom Solder Mask
- \*.GD1 - Drill Drawing
- \*.GG1 - Drill Guide
- \*.GM1 - Board Guide
- \*.GM4 - Fabrication
- \*.GTP - Top Paste Mask
- \*.GBP - Bottom Paste Mask

BOARD STACKUP



1 OZ COPPER TOP & BOTTOM, PLATED TO 2 OZ

0.063 OVERALL THICKNESS

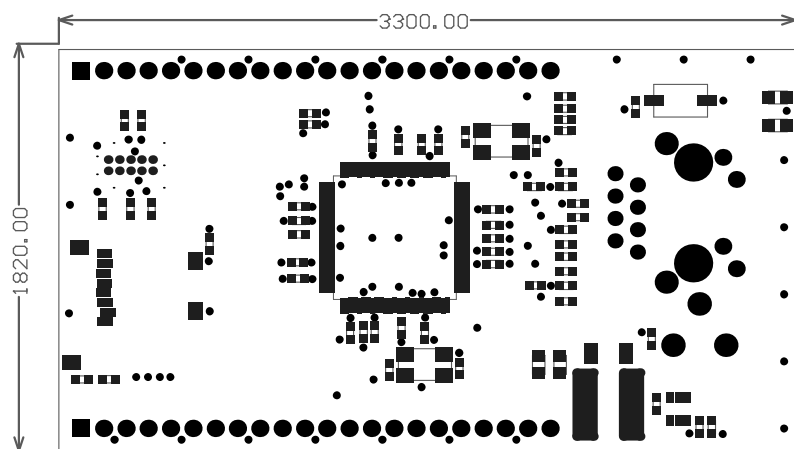
HOLE SIZE SPECIFIES FINISHED HOLE SIZE (TOL= +/- 2MIL)

FABRICATE PER IPC-6011 CLASS 2

UL RATING 94V-0 MIN

SOLDER MASK MATERIAL SHALL MEET ALL REQUIREMENTS OF IPC-SM-840

GERBER FILES MAY NOT BE ALTERED.



PCB MATERIAL: FR4  
 LAYERS: 2  
 SOLDER MASK: LPI

SMOBC  
 GREEN SOLDER MASK  
 WHITE SILKSCREEN

FILE EXTENSIONS:

- \*.GTO - Top Overlay (Silkscreen)
- \*.GBO - Bottom Overlay (Silkscreen)
- \*.GTS - Top Solder Mask
- \*.GBS - Bottom Solder Mask
- \*.GD1 - Drill Drawing
- \*.GG1 - Drill Guide
- \*.GM1 - Board Guide
- \*.GM4 - Fabrication
- \*.GTP - Top Paste Mask
- \*.GBP - Bottom Paste Mask

BOARD STACKUP



1 OZ COPPER TOP & BOTTOM, PLATED TO 2 OZ

0.063 OVERALL THICKNESS

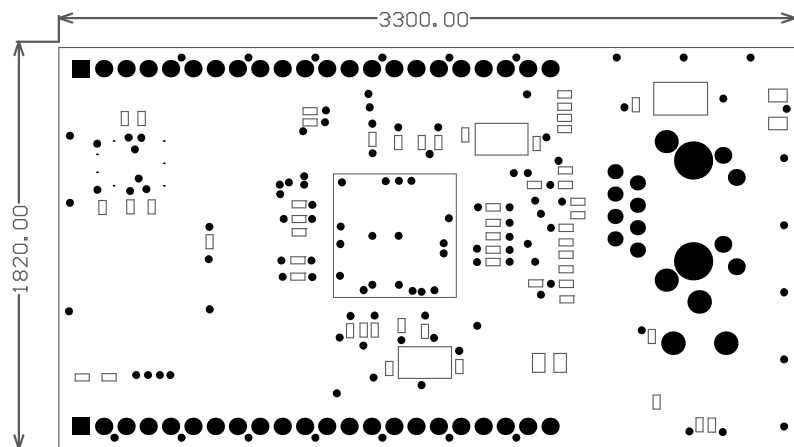
HOLE SIZE SPECIFIES FINISHED HOLE SIZE (TOL= +/- 2MIL)

FABRICATE PER IPC-6011 CLASS 2

UL RATING 94V-0 MIN

SOLDER MASK MATERIAL SHALL MEET ALL REQUIREMENTS OF IPC-SM-840

GERBER FILES MAY NOT BE ALTERED.



PCB MATERIAL: FR4  
 LAYERS: 2  
 SOLDER MASK: LPI

SMOBC  
 GREEN SOLDER MASK  
 WHITE SILKSCREEN

FILE EXTENSIONS:

- \*.GTO - Top Overlay (Silkscreen)
- \*.GBO - Bottom Overlay (Silkscreen)
- \*.GTS - Top Solder Mask
- \*.GBS - Bottom Solder Mask
- \*.GD1 - Drill Drawing
- \*.GG1 - Drill Guide
- \*.GM1 - Board Guide
- \*.GM4 - Fabrication
- \*.GTP - Top Paste Mask
- \*.GBP - Bottom Paste Mask

BOARD STACKUP



1 OZ COPPER TOP & BOTTOM, PLATED TO 2 OZ

0.063 OVERALL THICKNESS

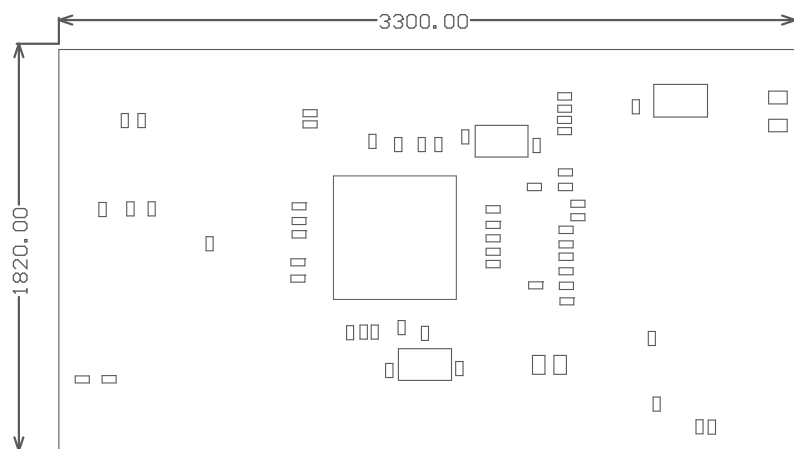
HOLE SIZE SPECIFIES FINISHED HOLE SIZE (TOL= +/- 2MIL)

FABRICATE PER IPC-6011 CLASS 2

UL RATING 94V-0 MIN

SOLDER MASK MATERIAL SHALL MEET ALL REQUIREMENTS OF IPC-SM-840

GERBER FILES MAY NOT BE ALTERED.



PCB MATERIAL: FR4  
 LAYERS: 2  
 SOLDER MASK: LPI

SMOBC  
 GREEN SOLDER MASK  
 WHITE SILKSCREEN

FILE EXTENSIONS:

- \*.GTO - Top Overlay (Silkscreen)
- \*.GBO - Bottom Overlay (Silkscreen)
- \*.GTS - Top Solder Mask
- \*.GBS - Bottom Solder Mask
- \*.GD1 - Drill Drawing
- \*.GG1 - Drill Guide
- \*.GM1 - Board Guide
- \*.GM4 - Fabrication
- \*.GTP - Top Paste Mask
- \*.GBP - Bottom Paste Mask

BOARD STACKUP



1 OZ COPPER TOP & BOTTOM, PLATED TO 2 OZ

0.063 OVERALL THICKNESS

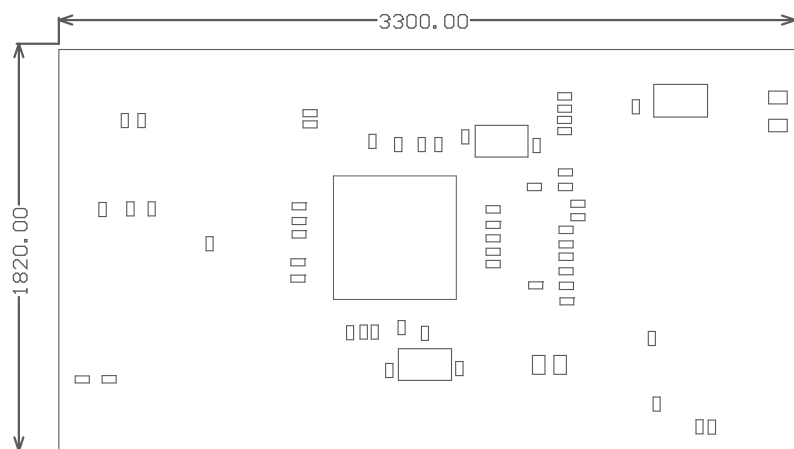
HOLE SIZE SPECIFIES FINISHED HOLE SIZE (TOL= +/- 2MIL)

FABRICATE PER IPC-6011 CLASS 2

UL RATING 94V-0 MIN

SOLDER MASK MATERIAL SHALL MEET ALL REQUIREMENTS OF IPC-SM-840

GERBER FILES MAY NOT BE ALTERED.



PCB MATERIAL: FR4  
 LAYERS: 2  
 SOLDER MASK: LPI

SMOBC  
 GREEN SOLDER MASK  
 WHITE SILKSCREEN

FILE EXTENSIONS:

- \*.GTO - Top Overlay (Silkscreen)
- \*.GBO - Bottom Overlay (Silkscreen)
- \*.GTS - Top Solder Mask
- \*.GBS - Bottom Solder Mask
- \*.GD1 - Drill Drawing
- \*.GG1 - Drill Guide
- \*.GM1 - Board Guide
- \*.GM4 - Fabrication
- \*.GTP - Top Paste Mask
- \*.GBP - Bottom Paste Mask

BOARD STACKUP



1 OZ COPPER TOP & BOTTOM, PLATED TO 2 OZ

0.063 OVERALL THICKNESS

HOLE SIZE SPECIFIES FINISHED HOLE SIZE (TOL= +/- 2MIL)

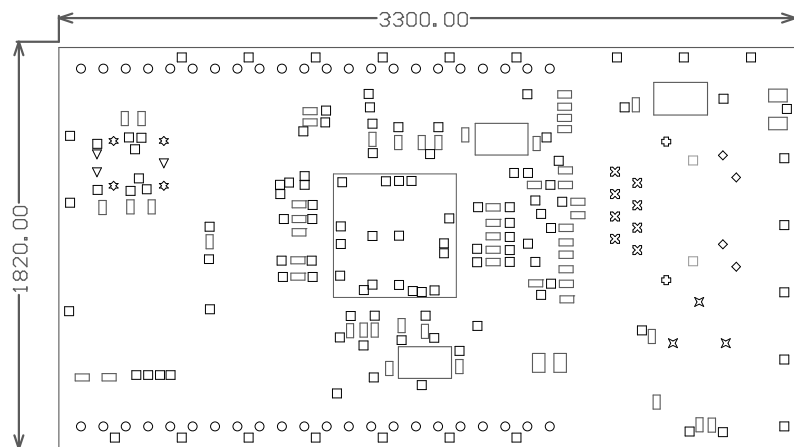
FABRICATE PER IPC-6011 CLASS 2

UL RATING 94V-0 MIN

SOLDER MASK MATERIAL SHALL MEET ALL REQUIREMENTS OF IPC-SM-840

GERBER FILES MAY NOT BE ALTERED.





Symbol	Hit Count	Tool Size	Plated	Hole Type
□	119	0.381mm (15mil)	PTH	Round
⊗	8	0.9mm (35.433mil)	PTH	Round
○	44	0.9144mm (36mil)	PTH	Round
▽	3	0.9906mm (39mil)	PTH	Round
◇	4	1.016mm (40mil)	PTH	Round
⊗	3	1.4mm (55.118mil)	PTH	Round
⊕	2	1.651mm (65mil)	PTH	Round
⊗	4	2.3749mm (93.5mil)	PTH	Round
□	2	3.2512mm (128mil)	PTH	Round
<b>189 Total</b>				

PCB MATERIAL: FR4  
 LAYERS: 2  
 SOLDER MASK: LPI

SMOBC  
 GREEN SOLDER MASK  
 WHITE SILKSCREEN

FILE EXTENSIONS:

- \*.GTO - Top Overlay (Silkscreen)
- \*.GBO - Bottom Overlay (Silkscreen)
- \*.GTS - Top Solder Mask
- \*.GBS - Bottom Solder Mask
- \*.GD1 - Drill Drawing
- \*.GG1 - Drill Guide
- \*.GM1 - Board Guide
- \*.GM4 - Fabrication
- \*.GTP - Top Paste Mask
- \*.GBP - Bottom Paste Mask

BOARD STACKUP



1 OZ COPPER TOP & BOTTOM, PLATED TO 2 OZ

0.063 OVERALL THICKNESS

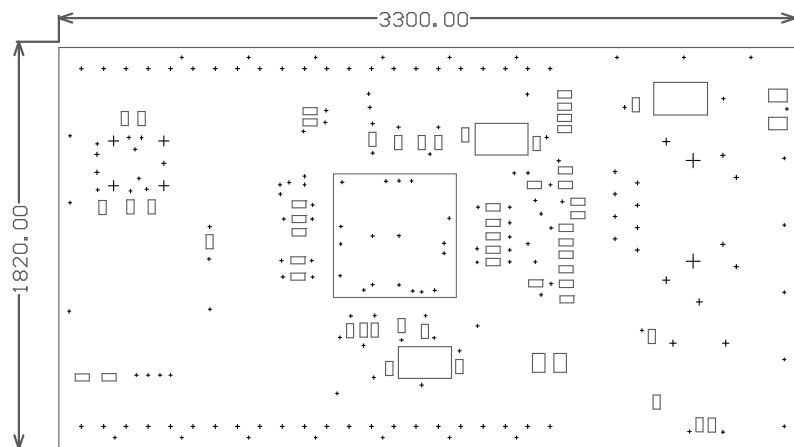
HOLE SIZE SPECIFIES FINISHED HOLE SIZE (TOL= +/- 2MIL)

FABRICATE PER IPC-6011 CLASS 2

UL RATING 94V-0 MIN

SOLDER MASK MATERIAL SHALL MEET ALL REQUIREMENTS OF IPC-SM-840

GERBER FILES MAY NOT BE ALTERED.



PCB MATERIAL: FR4  
 LAYERS: 2  
 SOLDER MASK: LPI

SMOBC  
 GREEN SOLDER MASK  
 WHITE SILKSCREEN

FILE EXTENSIONS:

- \*.GTO - Top Overlay (Silkscreen)
- \*.GBO - Bottom Overlay (Silkscreen)
- \*.GTS - Top Solder Mask
- \*.GBS - Bottom Solder Mask
- \*.GD1 - Drill Drawing
- \*.GG1 - Drill Guide
- \*.GM1 - Board Guide
- \*.GM4 - Fabrication
- \*.GTP - Top Paste Mask
- \*.GBP - Bottom Paste Mask

BOARD STACKUP



1 OZ COPPER TOP & BOTTOM, PLATED TO 2 OZ

0.063 OVERALL THICKNESS

HOLE SIZE SPECIFIES FINISHED HOLE SIZE (TOL= +/- 2MIL)

FABRICATE PER IPC-6011 CLASS 2

UL RATING 94V-0 MIN

SOLDER MASK MATERIAL SHALL MEET ALL REQUIREMENTS OF IPC-SM-840

GERBER FILES MAY NOT BE ALTERED.